



TransForge Corp. is an association of specialists who analyze and solve complex problems spanning several disciplines.

What kind of problems can TransForge solve?

TransForge can solve any problem that can be stated in terms of relationships between systems. TransForge specialists employ an analytical framework called 'metameaning' to solve problems.

Some of the problems addressed by TransForge may be found on our website: www.transforge.com

What is metameaning?

Literally 'the meaning of meaning', metameaning is a logical discipline that offers a rigorous means of analyzing and utilizing the relationships between systems. These systems may be physical systems such as those in a petroleum refinery, they may be social systems such as community health services, or they may be an amalgam of many different systems.

Based on mathematical and physical concepts, metameaning is:

- scalable - it can be applied at any scale regardless of size - from sub-atomic particles to galaxies
- applicable - it can be applied to any system regardless of complexity - from the simple lever to biological and political systems
- complementary - it extends understanding without conflict

What does metameaning do?

With metameaning a TransForge consultant can:

- Identify the nature and scope of a problem
- Constrain the problem within its true scope
- Solve the problem by addressing all of its aspects concurrently

Often the scope of a problem is wider than immediately apparent. The art of defining a problem correctly lies largely in limiting its scope while encompassing its factors.

Metameaning offers a methodology for optimally defining the scope of a problem and preventing it from spreading into other areas.

Some problems can only be stated and understood in specialized domains such as mathematics, law, medicine, physics, etc.

Metameaning can access and apply specialized knowledge across all domains, regardless of the underlying theory.

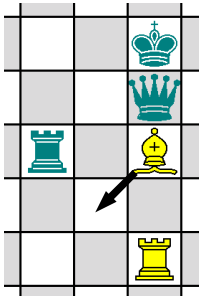
Over their lifetime, projects and systems tend to develop progressively more inertia. Mistakes can become ever more obvious but nevertheless remain kernel to the systems they are part of.

Metameaning manages mistakes in a way that both accommodates and limits their scope.

There may be strong reasons why legacy systems must be supported.

Metameaning can accommodate and extend existing systems within any constraints that apply.

The white bishop moves from a threatened position to threaten the black castle and protect the white castle. It also exposes the black queen to the white castle, pinning her in front of the black king.



One move that achieves many positive things—a characteristic of metameaning.

TransForge Corp.

email: enquiry@transforge.com
 web: www.transforge.com